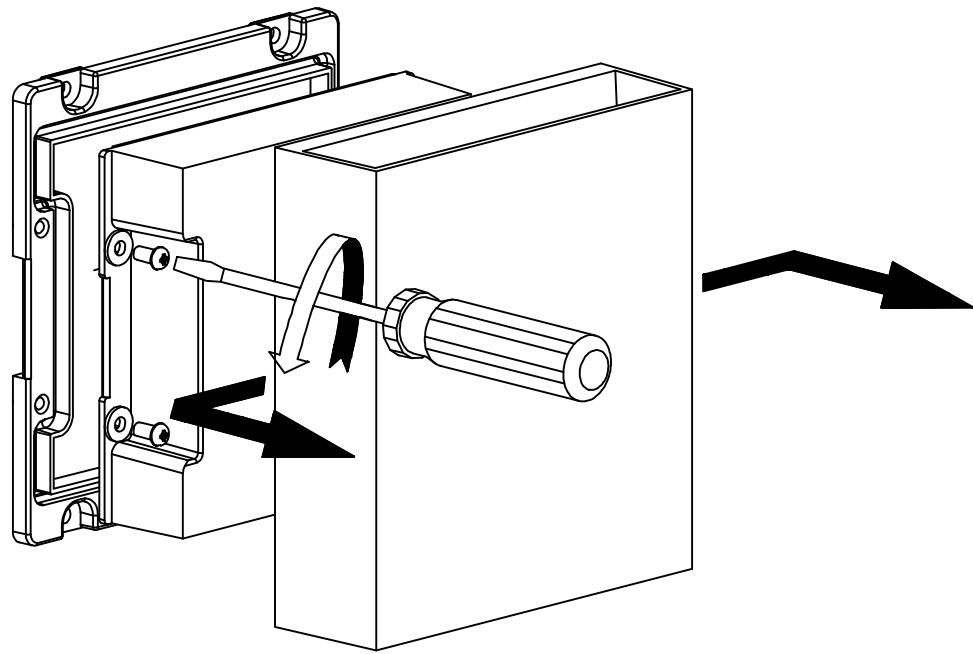
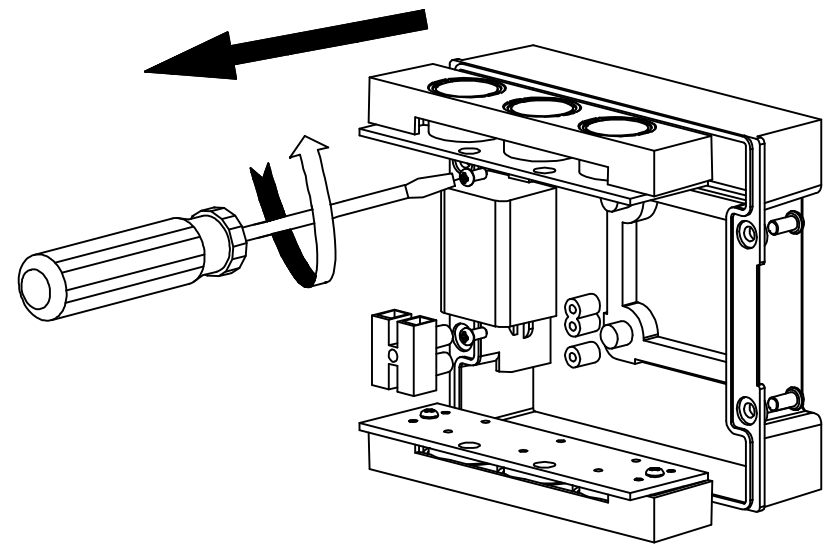


- 1 Loosen the screws on the PC cover and open it
Open the lamp cover



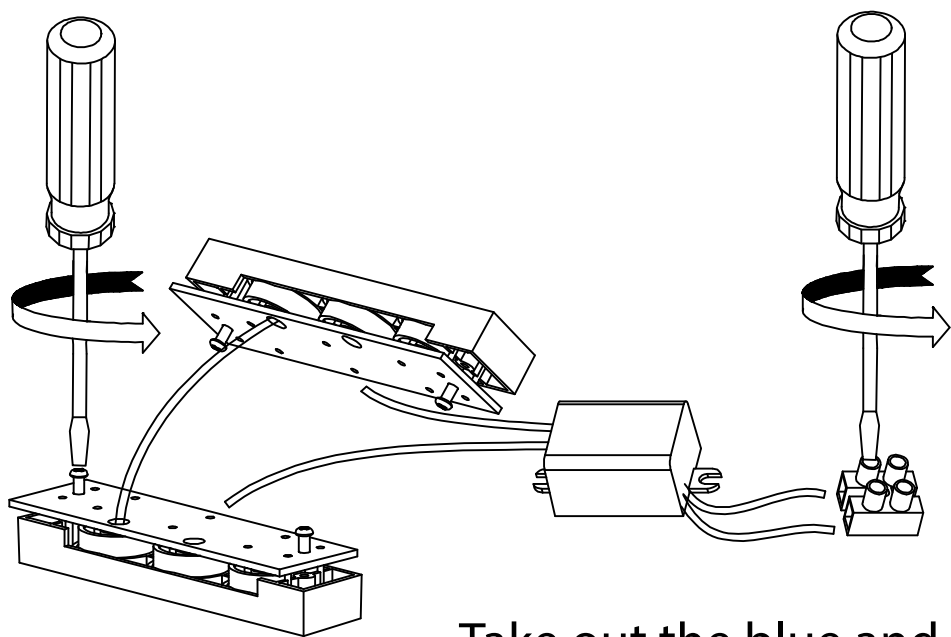
TOOL Screwdriver

- 2 Loosen the screws on the driver.
Take out the LED module from the PC cover module.



TOOL Screwdriver

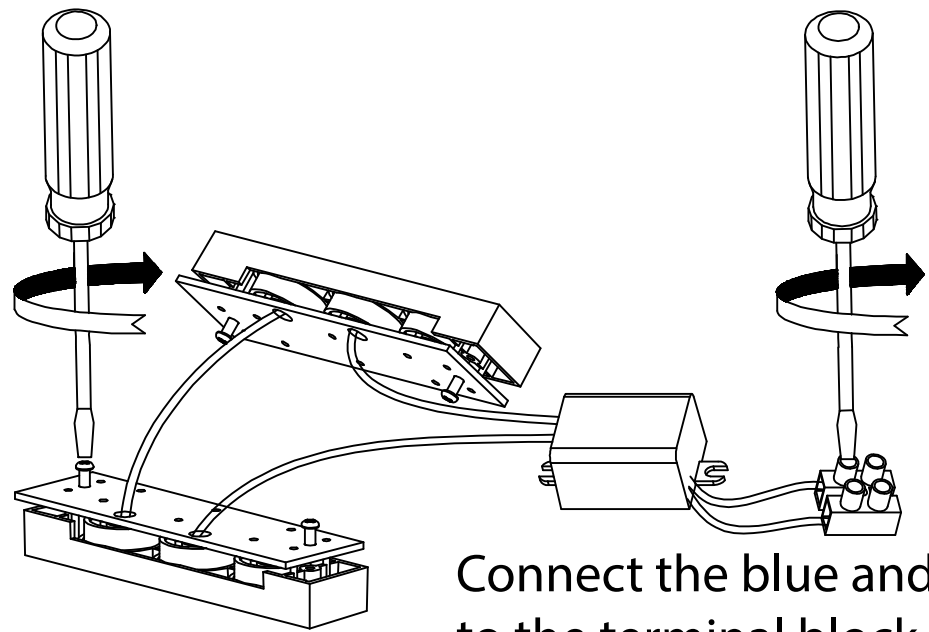
- 3 Loosen the screws on the LED board
Take out the red and black wire from the LED module



Take out the blue and brown wire from the terminal block

TOOL Screwdriver
Electric soldering iron

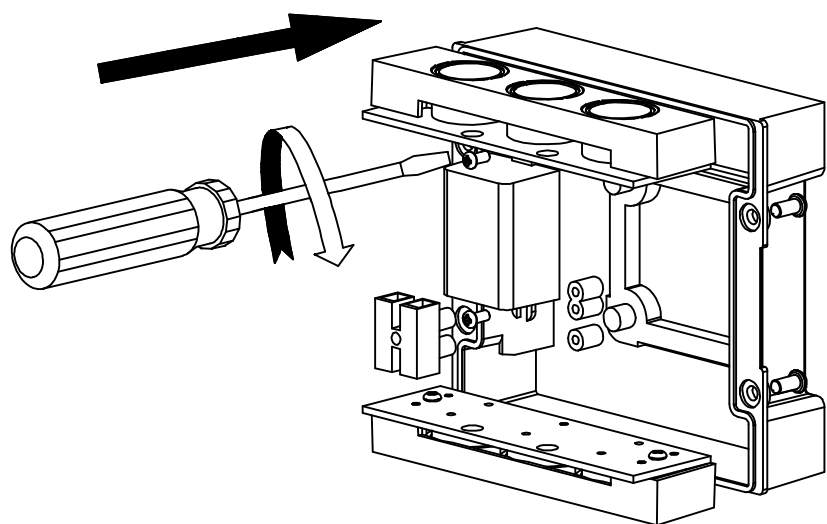
- 4 Re-solder the red and black wire of the new driver on the LED module.
Fix the LED board with screws to the lens module.



Connect the blue and brown wire to the terminal block

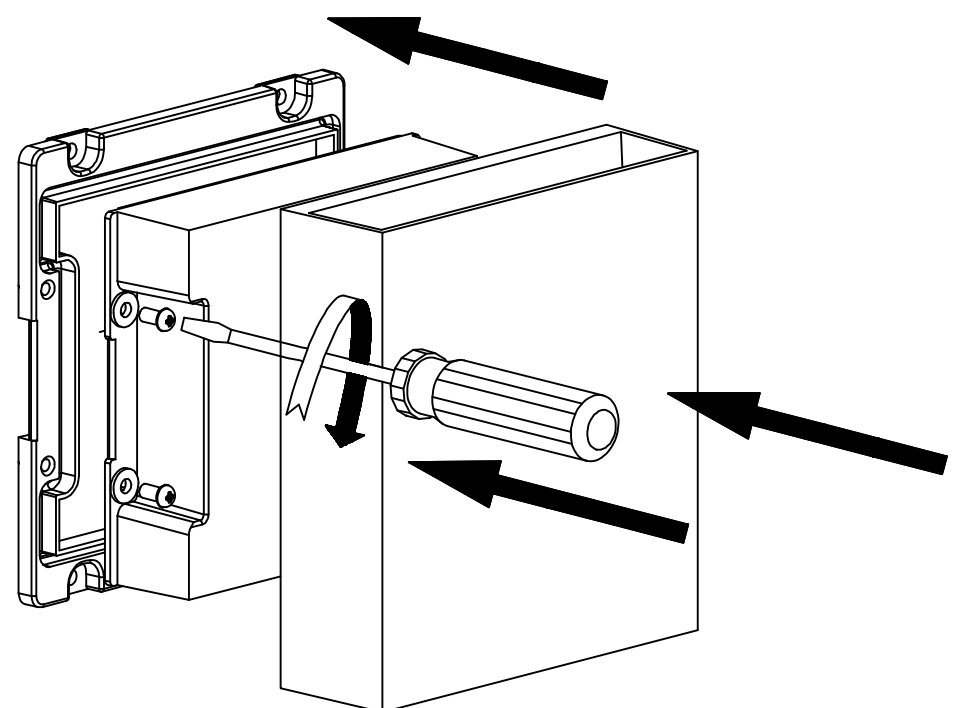
TOOL Screwdriver
Electric soldering iron

- 5 Fix the new driver with screws.
Attach the LED module.



TOOL Screwdriver

- 6 Fix the PC cover with screws and attach the lamp cover



TOOL Screwdriver