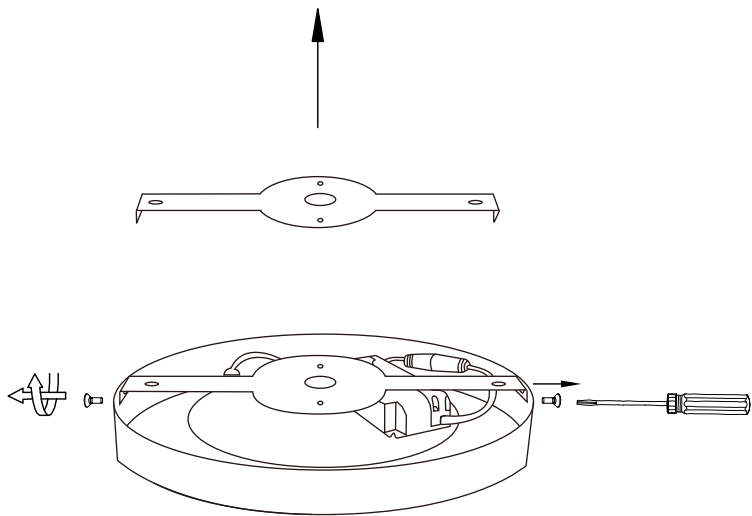


**A**

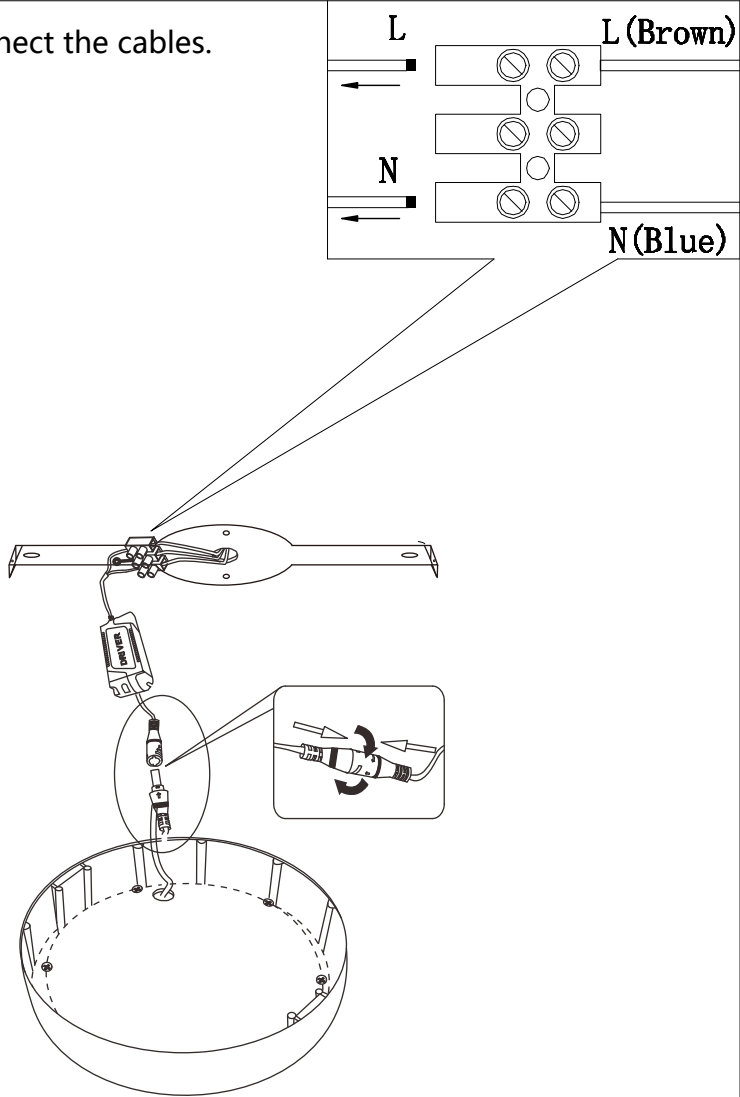
Remove the ceiling mount.

**TOOL**

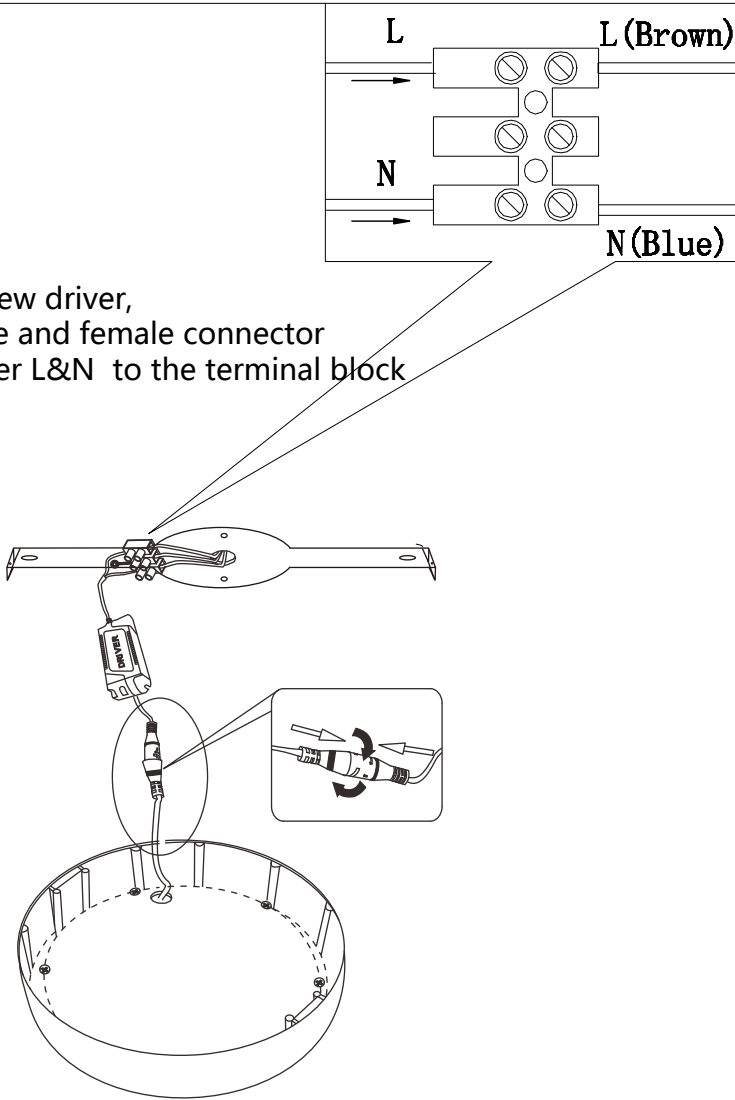
screw driver

**B**

Disconnect the cables.

**TOOL**

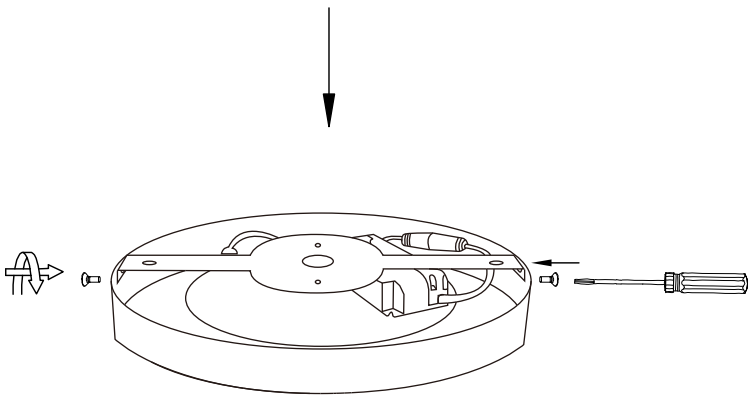
screw driver

**C**Replace with a new driver,  
connect the male and female connector  
connect the driver L&N to the terminal block**TOOL**

screw driver

**D**

install the ceiling mount

**TOOL**

screw driver